

Hand-Held Containers

Straight Wall Container System



page 30-34

Modular Nesting Container Systems



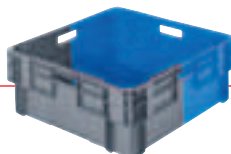
page 35-37

Stack & Nest Totes



page 38-39

Bi-Color Stack & Nest Totes



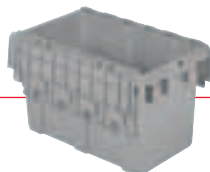
page 40-41

Heavy-Duty Boxes, Totes & Trays



page 42-45

Attached Lid Containers



page 46-53

Detached Lid Containers



page 54-55

Buckhorn is the complete source for an extensive variety of reusable, hand-held containers—from tough, heavy-duty performers to the most versatile all-purpose designs. Manufactured by injection or structural foam molding, these versatile totes are easy to handle, strong, efficient, and recyclable.

S = In Stock Items

Items identified by this symbol **S** are available for quick shipment in the color specified. Most products are available in the colors listed on page 93 with a minimum order quantity. Lead times may vary, please call Customer Service at 800-543-4454 for details.

Straight Wall Container System



Buckhorn's reusable Straight Wall Container System delivers total cost savings and efficiency throughout the supplier-to-manufacturer material handling process.

Our stack-only modular containers are ideal for closed loop shipping, in-process handling, and storage applications where the same containers are used throughout. Containers cube 48" x 45" and 48" x 40" pallets.

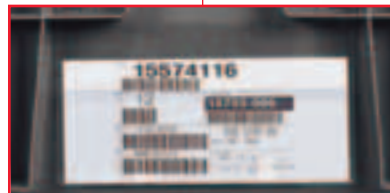
- Reinforced sides and bottoms enhance product protection
- Straight interior walls ensure an easy fit for protective dunnage
- Ergonomic design for manual lifting and loading safety and efficiency
- Interworking sizes allow mixed stacking on pallet
- Perimeter dust skirt on select sizes for added product protection
- Cross cube models allow easier interworking of different footprints
- Compatibility with other brands to expand your existing system
- Injection molded HDPE construction for impact, moisture and chemical resistance
- Options: Lids, ID systems, dunnage, drain holes and cross-stacking bottoms

Available Colors

- Standard: Dark Gray, Green and Dark Blue on selected models. See specifications chart for details.
- Custom: Available in quantity orders

[S] = In Stock Items

Items identified by this symbol **[S]** are available for quick shipment in the color specified. Most products are available in the colors listed on page 93 with a minimum order quantity. Lead times may vary, please call Customer Service at **800-543-4454** for details.



Identification Systems

Identification of contents is easy with optional cardholders and label placards. Hot stamping is also available

System Terms

Injection Molded: Process that produces a solid, lightweight product with impact resistance.

Structural Foam Molded: Process that produces an extremely durable product that withstands heavy loads and high abuse.

Modular Design: Engineered to fit and stack precisely for maximum trailer cube utilization.

Dynamic Load: The weight capacity of the pallet during shipping.

"Seat Belt" System: Wraps around containers and locks into top cap to secure load.

Straight Wall Design

Straight, smooth interior walls allow for maximum cube and easy insertion of dunnage

Reinforced Corner Ribbing

Provides maximum column strength for secure stacking

Large Identification Areas

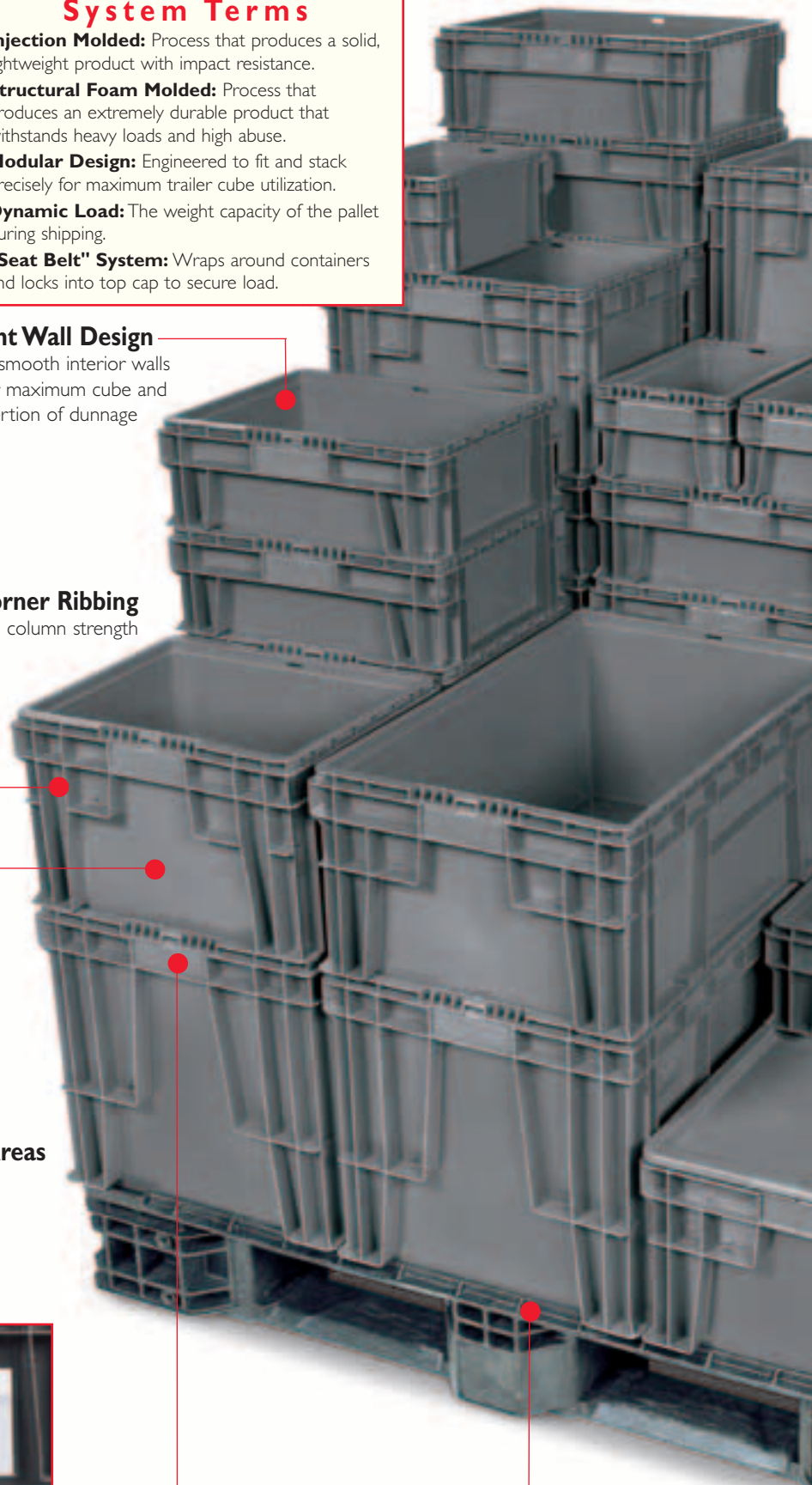
Located on all four sides

Deep, Ergonomic Handles

For enhanced comfort, efficiency, and safety when lifting loaded containers

Pallet Perimeter Lip

Provides load stability and prevents container slippage



Profit *in Motion*

The Bottom Line on the Straight Wall...

- Maximum internal/external cube utilization
 - Long-lasting performance and value
 - Reduced handling risks and increased efficiency
 - Exceptional stability—with versatility
- ... *The System That Contains Your Costs!*

Straight Wall Container System Features

Lids

Protect contents against dust, dirt and other contaminants. Some containers are available with attached lids



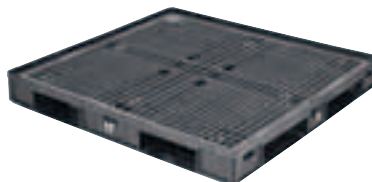
Cross Cube Containers

Our SX Cross Cube containers have a special bottom-grid design that facilitates stacking of larger containers on smaller containers.

- Optimize pallet space with vertically modular loads
- Improve line space usage
- Sequence parts by usage
- Reinforced bottom for secure stacking



Pallet Systems & Top Caps



4-way entry pallets feature:

- Dynamic weight capacity 3,000-8,000 lbs. (varies by pallet model)*
- Perimeter lips available on each pallet
- 2 to 4 Pallet Lock "Seat Belt" Systems

*Based on equally distributed load at room temperature of 73°F (+/- 5°)



Top caps increase stability by:

- Securing top layer of palletized containers
- Accommodating optional pallet lock "seat belt" system to further secure stacks

Custom Interior Dunnage

Ask about custom interior packaging to protect your product



Space Saving Design

The modular design cubes the AIAG standard 48" x 45" pallet and 48" x 40" pallet for maximum space usage



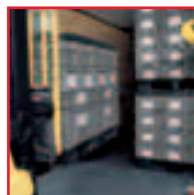
Ideal for Applications in...



Automotive



Appliance



Component Parts Shipping



Assembly/Parts Picking

plus ...

- General Manufacturing
 - In-Process Handling
 - Pharmaceuticals
 - Small Parts
- ... and many more!

Straight Wall Container System

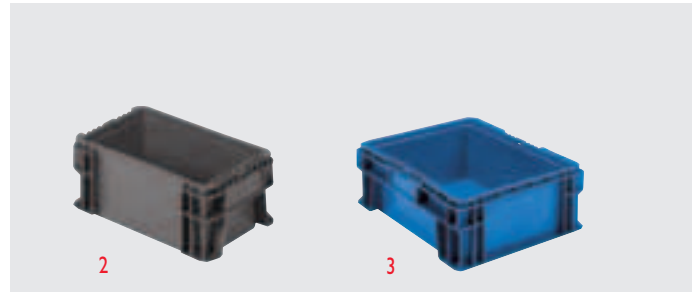
Straight Wall Container System

Our line of stack-only straight wall containers with matching pallets and top caps offer greater capacity and flexibility for parts shipping, in-process handling, and storage in manufacturing applications. Straight, solid walls provide optimal internal and external space efficiency.

- Modular design cubes 48" x 45" and 48" x 40" pallets
- Interworking sizes allow mixed stacking on pallets
- Compatible with automated handling systems
- SW prefix denotes standard bottom
- SX prefix denotes cross cube bottom
- SA prefix denotes attached lids
- 7 sizes available with perimeter dust skirts for additional product protection
- Lids snap tightly in place protecting contents from contaminants. Tie holes allow lids to be secured with ties
- Custom dunnage design guidance available; Call for details
- **OPTIONS:** Lids and ID systems.

NEW!

Attached Lid
provides greater product protection

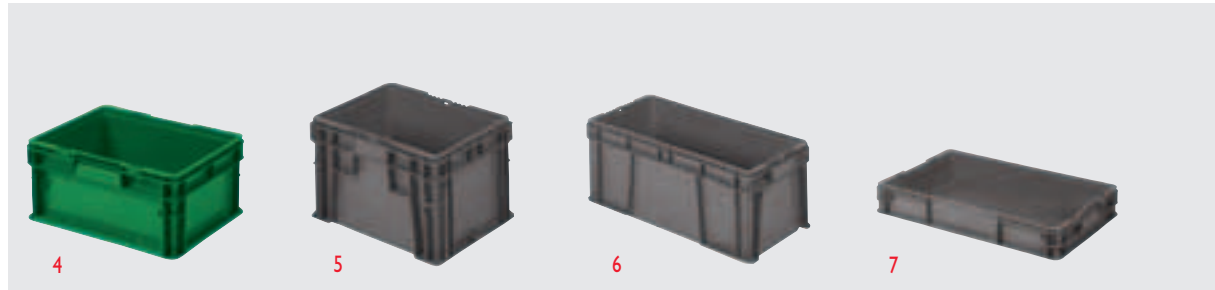


[S] Model No. SA15120802
Dim: L 15" x W 12" x H 7.5"
Color: Dk. Gray

[S] Model No. SA15121002 (1)
Dim: L 15" x W 12" x H 9.5"
Color: Dk. Gray

[S] Model No. SW12070502 (2)
Dim: L 12" x W 7.5" x H 5"
Color: Dk. Gray

[S] Model No. SW15120602 (3)
Dim: L 15" x W 12" x H 5.5"
Colors: Dk. Gray, Green, Dk. Blue



[S] Model No. SW151208A2 (4)
[S] Model No. SX151208A4
Dim: L 15" x W 12" x H 7.5"
Colors: Dk. Gray, Green, Dk. Blue (SW151208A4 Stocked in Dk. Gray) w/Dust Skirt

[S] Model No. SW15121002 (5)
Dim: L 15" x W 12" x H 9.5"
Color: Dk. Gray

[S] Model No. SW24111002 (6)
Dim: L 24" x W 11" x H 9.5"
Color: Dk. Gray

[S] Model No. SW241504A2 (7)
[S] Model No. SX241504A4
Dim: L 24" x W 15" x H 4"
Color: Dk. Gray w/Dust Skirt



[S] Model No. SW24150602 (8)
Dim: L 24" x W 15" x H 5.5"
Colors: Dk. Gray, Green, Dk. Blue

[S] Model No. SW241508A2 (9)
[S] Model No. SX241508A4
Dim: L 24" x W 15" x H 7.5"
Colors: Dk. Gray, Green, Dk. Blue (SX241508A4 Stocked in Dk. Gray) w/Dust Skirt

[S] Model No. SW24151002 (10)
[S] Model No. SX24151000
Dim: L 24" x W 15" x H 9.5"
Color: Dk. Gray

[S] Model No. SW241511A2 (11)
[S] Model No. SX241511A4
Dim: L 24" x W 15" x H 11"
Color: Dk. Gray w/Dust Skirt

[S] Model No. SW24151502 (12)
[S] Model No. SX24151500
Dim: L 24" x W 15" x H 14.5"
Color: Dk. Gray

Straight Wall Container System



[S] Model No. SW242208A2 (13)
[S] Model No. SX242208A4
Dim: L 24" x W 22" x H 7.5"
Color: Dk. Gray w/Dust Skirt

[S] Model No. SW242211A2 (14)
[S] Model No. SX242211A4
Dim: L 24" x W 22" x H 11"
Color: Dk. Gray w/Dust Skirt

[S] Model No. SW242215A2 (15)
[S] Model No. SX242215A4
Dim: L 24" x W 22" x H 14.5"
Color: Dk. Gray w/Dust Skirt

[S] Model No. SW32150802
Dim: L 32" x W 15" x H 7.5"
Color: Dk. Gray

Model No. SW48150802 (16)
Model No. SX48150800
Dim: L 48" x W 15" x H 7.5"
Color: Dk. Gray

[S] = In Stock Items

Pallets

- Structural foam construction
- Closed or ventilated deck, depending on model, for easy cleaning
- 4-way fork entry
- Rackable for space savings
- Perimeter lip to prevent container slippage
- Optional seat belts wrap around the containers and lock into the top cap for more load stability, eliminating the need for banding or stretch wrap
- **OPTIONS:** ID tag locations



- Model No. PM32300632 (1)**
 Dim: L 32" x W 30" x H 6"
 Capacity: 3,000 lbs. / 1,361 kg
 Color: Black
 *to deck of pallet
- Model No. PO48450632 (2)**
 Dim: L 48.75" x W 45.75" x H 6"
 Capacity: 3,000 lbs. / 1,350 kg (dynamic)
 Color: Black
 *to deck of pallet
- Model No. PR48450533 (3)**
 Dim: L 48.50" x W 45.25" x H 5"
 Capacity: 8,000 lbs. / 3,600 kg (dynamic)
 Color: Black
- Model No. PW48450622**
 Dim: L 47.62" x W 44.75" x H 6.38"
 Capacity: 7,000 lbs. / 3,150 kg (dynamic)
 Color: Black

Top Caps

- Top caps secure container loads for stacking, shipping, and storing in racks
- Optional seat belts wrap around the containers and lock into the top cap for more load stability, eliminating the need for banding or stretch wrap
- Pallets slide into grooves on the top cap surface for secure stacking
- Vacuum formed cap also available for **PO48450632** and **PR48450533**. See page 34 for specifications.
- **OPTIONS:** ID label areas



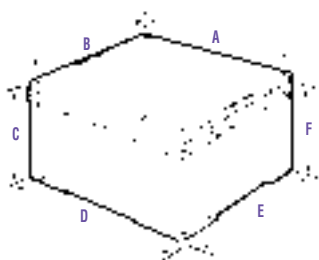
- Model No. TM32300300 (4)**
 Compatible with 32x30 pallet
 Dim: L 33" x W 31" x H 2.5"
 Color: Black
- Model No. TV48450300 (5)**
 Dim: L 49" x W 46" x H 2.75"
 Construction: Vacuum Formed
 Color: Black
- Model No. TO48450300 (6)**
 Compatible with PO pallet
 Dim: L 48.75" x W 45.75" x H 2.75"
 Color: Black
- Model No. TW48450200 (7)**
 Compatible with 48x45 PW pallets
 Dim: L 48.24" x W 45.24" x H 2.25"
 Color: Black



Straight Wall Container System Specifications

Straight Wall

- Stock color: Dark Gray
Models **SW15120602**, **SW151208A2**, **SW24150602**, and **SW241508A2** also available in Green, Dk. Blue
- Other colors available, minimum order required



Model No.	Description	Dimensions						Weight lbs	Weight Capacity lbs	Volume Cu. Ft.	Trailer Capacity	
		L"(A)	W"(B)	H"(C)	L"(D)	W"(E)	H"(F)				48'	53'
[S] SW12070502	Solid Bottom/Sides	12	7.5	5	9.38	5.44	4.38	1.2	60	0.13	10,368	11,232
		305	191	127	238	138	111	0.5	27	3.66	—	—
[S] SW15120602	Solid Bottom/Sides	15	12	5.5	13	9.38	4.88	2.3	100	0.34	4896	5304
		381	305	140	330	238	124	1.0	45	9.75	—	—
[S] SW151208A2	Solid Bottom/Sides	15	12	7.5	13	9.38	6.88	2.5	100	0.49	3456	3744
		381	305	191	330	238	175	1.1	45	13.75	—	—
[S] SW15121002	Solid Bottom/Sides	15	12	9.5	13	9.38	8.88	3.5	100	0.63	2592	2808
		381	305	241	330	238	226	1.6	45	17.75	—	—
[S] SW24111002	Solid Bottom/Sides	24	11	9.5	21.38	9.13	8.88	4.3	100	1.00	2016	2160
		610	279	241	543	232	226	2.0	45	28.41	—	—
[S] SW241504A2	Solid Bottom/Sides	24	15	4	21.38	13	3.38	2.9	100	0.54	3456	3744
		610	381	102	543	330	86	1.3	45	15.40	—	—
[S] SW24150602	Solid Bottom/Sides	24	15	5.5	21.38	13	4.88	3.7	100	0.78	2448	2652
		610	381	140	543	330	124	1.7	45	22.23	—	—
[S] SW241508A2	Solid Bottom/Sides	24	15	7.5	21.38	13	6.88	4.1	100	1.11	1728	1872
		610	381	191	543	330	175	1.9	45	31.34	—	—
[S] SW24151002	Solid Bottom/Sides	24	15	9.5	21.38	13	8.88	5.3	100	1.43	1296	1404
		610	381	241	543	330	226	2.4	45	40.45	—	—
[S] SW241511A2	Solid Bottom/Sides	24	15	11	21.38	13	10.38	5.4	100	1.67	1152	1248
		610	381	279	543	330	264	2.5	45	47.28	—	—
[S] SW24151502	Solid Bottom/Sides	24	15	14.5	21.38	13	13.88	6.9	100	2.23	864	936
		610	381	368	543	330	353	3.1	45	63.23	—	—
New! [S] SW242208A2	Solid Bottom/Sides	24	22	7.5	21.38	20.38	6.88	5.8	100	1.73	1152	1248
		610	559	191	543	518	175	2.6	45	49.13	—	—
New! [S] SW242211A2	Solid Bottom/Sides	24	22	11	21.38	20.38	10.38	7.6	100	2.62	768	832
		610	559	279	543	518	264	3.4	45	74.12	—	—
New! [S] SW242215A2	Solid Bottom/Sides	24	22	14.5	21.38	20.38	13.88	8.7	100	3.50	576	624
		610	559	368	543	518	353	3.9	45	99.12	—	—
[S] SW32150802	Solid Bottom/Sides	32	15	7.5	29.38	13	6.88	5.6	100	1.52	1152	1248
		813	381	191	746	330	175	2.5	45	43.07	—	—
[S] SW48150802	Solid Bottom/Sides	48	15	7.5	45.38	13	6.88	7.5	100	2.35	864	936
		1219	381	191	1153	330	175	3.4	45	66.52	—	—

Capacity is dependent upon application and use environment. Check with Buckhorn for suitability in your application. Specifications subject to change without notice.

Straight Wall Container System Specifications

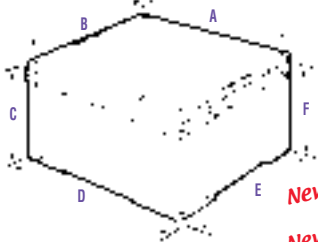
Attached Lid Containers

- Stock color: Dark Gray
- Other colors available, minimum order required

Model No.	Description	Dimensions					Inside Usable Height H"(F)	Weight lbs.	Weight Capacity lbs.	Volume Cu.Ft.	Trailer Capacity 53'
		L"(A)	Outside Top W"(B)	H"(C)	Inside Bottom L"(D)	W"(E)					
New! [S] SA15120802	Attached Lid	15	12	7.5	13	9.38	6.88	3.5	100	0.49	3744
	mm/kg/m³/l	381	305	191	330	238	175	1.6	45	13.75	—
New! [S] SA15121002	Attached Lid	15	12	9.5	13	9.38	8.88	4.5	100	0.63	2808
		381	305	241	330	238	226	2	45	17.75	—

Cross Cube Containers

- Stock color: Dark Gray
- Other colors available, minimum order required



Model No.	Description	Dimensions					Inside Usable Height H"(F)	Weight lbs.	Weight Capacity lbs.	Volume Cu.Ft.	Trailer Capacity 53'	
		L"(A)	Outside Top W"(B)	H"(C)	Inside Bottom L"(D)	W"(E)					48'	53'
[S] SX151208A4	Solid Bottom/Sides	15	12	7.5	13	9.38	6.38	2.8	100	0.45	3456	3744
	mm/kg/m³/l	381	305	191	330	238	162	1.3	45	12.75	—	—
[S] SX241504A4	Solid Bottom/Sides	24	15	4	21.38	13	2.88	3.5	100	0.46	3456	3744
		610	381	102	543	330	73	1.6	45	13.12	—	—
[S] SX241508A4	Solid Bottom/Sides	24	15	7.5	21.38	13	6.38	4.6	100	1.03	1728	1872
		610	381	191	543	330	162	2.1	45	29.06	—	—
[S] SX24151000	Solid Bottom/Sides	24	15	9.5	21.38	13	8.38	6.2	100	1.35	1188	1404
		610	381	241	543	330	213	2.8	45	38.17	—	—
[S] SX241511A4	Solid Bottom/Sides	24	15	11	21.38	13	9.88	5.9	100	1.59	1152	1248
		610	381	279	543	330	251	2.7	45	45.00	—	—
[S] SX24151500	Solid Bottom/Sides	24	15	14.5	21.38	13	13.38	7.6	100	2.18	864	936
		610	381	368	543	330	340	3.4	45	61.86	—	—
New! [S] SX242208A4	Solid Bottom/Sides	24	22	7.5	21.38	20.38	6.38	6.3	100	1.61	1152	1258
		610	559	191	543	518	162	2.9	45	45.60	—	—
New! [S] SX242211A4	Solid Bottom/Sides	24	22	11	21.38	20.38	9.88	8.0	100	2.49	768	832
		610	559	279	543	518	251	3.6	45	70.55	—	—
New! [S] SX242215A4	Solid Bottom/Sides	24	22	14.5	21.38	20.38	13.38	9.1	100	3.37	576	624
		610	559	368	543	518	340	4.1	45	95.55	—	—
[S] SX48150800	Solid Bottom/Sides	48	15	7.5	45.38	13	6.38	8.9	100	2.18	864	936
		1219	381	191	1153	330	162	4.0	45	61.68	—	—

Lids Straight Wall & Cross Cube

- Stock colors: Dark Gray

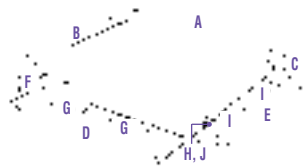
Model No.	Description	Dimensions Outside Top		Straight Wall Footprint
		L"	W"	
[S] SL12070100	Vacuum Formed	11.75	7.25	12" x 7"
	mm/kg	298	184	
[S] SL15120100	Injection Molded	15	12	15" x 12"
		381	305	
[S] SL24150100	Injection Molded	24	15	24" x 15"
		610	381	
[S] SL24110100	Injection Molded	24	11.22	24" x 11"
		610	285	
[S] SL24220100	Injection Molded	24.03	22.06	24" x 22"
		610.3	560	

Label Placard & Card Holders

Identification Systems for Straight Wall Containers	Model Number
Self-Adhesive Clear Plastic Card Holder for 4.5" x 3.5" Card	04ACCH029473C00
Self-Adhesive Clear Plastic Card Holder for 6" x 4" Card	04ACCH029483C00
Card Holder, 8.25" x 4.25"	0804CHMX0200003
Label Placard, 4.5" x 6.5"	04ACLBPK00109

Pallets

- Stock color: Black



Model No.	Description	Dimensions					Weight lbs.	Weight Capacity			Fork Tunnel Dimensions				Return Ratio	Truck Capacity 48' 53'	
		External L"(A)	W"(B)	H"(C)	Internal L"(D)	W"(E)		Static lbs.	Dynamic lbs.	Rack lbs.	48' Side L"(G)	H"(H)	40' & 45' Side L"(I)	H"(J)		48'	53'
[S] PM32300632	32"x30"	32	30	6	31.40	29.4	25.7	20,000	3000	2000	9	3.7	8.7	3.7	1:1	864	960
	mm/kg	813	762	152	798	747	11.7	9074	1361	907	229	94	221	94	—	—	—
[S] PW48400622	48"x40" 1/2" Lip	47.62	39.75	6.38	45.87	38	42.35	20,000	7000	2500	11.75	3.38	10.38	3.38	1:1	420	450
		1210	1010	162	1165	965	19.2	9074	3176	1134	298	86	264	86	—	—	—
[S] PO48450632	48"x45" 3/4" Lip	48.75	45.75	6	48	45	58	30,000	3000	2000	13.12	3.65	13.45	3.65	1:1	408	442
		1238	1162	152	1219	1143	28.6	13,612	1361	907	333	93	343	93	—	—	—
[S] PR48450533	48"x45" 1" Lip	49	45.75	5	48	44.75	63	32,000	8000	3000	8.75	3.5	11.2	3.5	1:1	360	390
		1245	1162	127	1219	1137	29	14,519	3630	1361	222	89	284	89	—	—	—
[S] PW48450622	48"x45" 1" Lip	47.62	44.75	5.87	45.87	43.25	45.31	20,000	7000	2500	11.88	3.38	10.38	3.38	1:1	360	390
		1210	1137	149	1165	1099	21	9074	3176	1134	302	86	264	86	—	—	—

*Height to deck.

Top Caps

- Stock color: Black



Model No.	Description	Dimensions					Top Cap Weight lbs.	Return Ratio	Compatible Pallet
		External L"(A)	W"(B)	H"(C)	Internal L"(D)	W"(E)			
[S] TM32300300	32"x30"	33	31	2.5	32.5	31.5	9.8	1:1	PM32300632
	mm/kg	838	787	64	826	800	4	—	—
[S] TW48400200	48"x40"	48.56	40.63	2.25	48.17	40.24	22.9	1:1	PW48400722
		1233	1032	57	1224	1022	10	—	—
[S] TO48450300	48"x45"	48.75	45.25	2.75	48.5	45.5	25	1:1	PO48450632, PR48450733
		1238	1149	70	1232	1156	11	—	—
[S] TV48450300	48"x45"	49	46	3	48.5	45.5	15	1:1	PO48450632, PR48450733
		1245	1168	76	1232	1156	7	—	—
[S] TR48450200	48"x45"	49	46	2	48.5	45.5	22	1:1	PO48450632, PR48450733
		1245	1168	56	1232	1156	10	—	—
[S] TW48450200	48"x45"	48.63	45.63	2.25	48.24	45.23	24.8	1:1	PW48450722
		1235	1159	57	1225	1149	11	—	—

[S] = In Stock Items

*Capacity is dependent upon application and use environment. Check with Buckhorn for suitability in your application. Specifications subject to change without notice.